



LED-Cindy

LUMINAIRE FOR WORKSPACES



Versatile luminaire for workspaces

IP44

Operating Conditions

Typical applications for LED-Cindy include worktops that require a slim light fixture. The splash-proof (IP44) LED-Cindy is particularly suitable for corner mount over kitchen worktops.



Installation and maintenance

LED-Cindy can be installed on ceiling or wall surfaces. Corner mount is also possible. Valtavallo LED tubes can be easily installed or replaced without any electrical work.

G3+

Lifetime

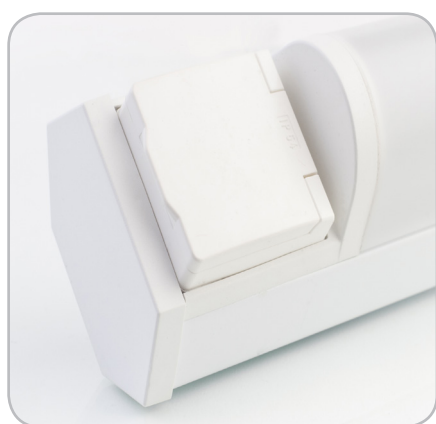
The LED-Cindy luminaire is manufactured in Finland. When equipped with extremely longlasting Valtavallo G3+ LED tubes, the light source only needs to be replaced approximately every 62,500 hours.

LED-Cindy

LUMINAIRE FOR WORKSPACES

Technical Specification

Model	LED-Cindy-109	LED-Cindy-118	LED-Cindy-122
Power	1 x 10W	1 x 19W	1 x 24W
Dimensions (length x width x height mm)	765 x 79 x 45/75	1375 x 79 x 45/75	1675 x 79 x 45/75
Socket Type	T8 / G13		
Input Voltage	230 V AC, 50/60 Hz		
Warranty	3 years		
Protection Class	IP-44 (with louvre)		
Housing Material	White painted galvanised steel sheet, ends of UV stabilised ABS plastic		
Cover Material	Smooth opal plastic		
Connection	Through 3 x 2,5 mm ² , Feed throughs in the centre of the luminaire (2 pcs)		
Installation	Ceiling and wall surfaces Corner mount also possible Cable can be run inside the luminaire housing.		
Accessories	Splash-proof plug socket, separate switch and motion detector If the luminaire has a plug socket as well as its own switch, there is no separate switch but it can be found by the socket.		
Additional information	Applicable only for LED tubes, cannot be used with traditional fluorescent tubes. Also available through-wired on request.		



Splash-proof plug socket
as an accessory



Separate switch
as an accessory



Motion detector
as an accessory



Made in Finland